

Boutique Bathrooms

by

COCOON





COCOON

WWW.BYCOCOON.COM

Index

9	The COCOON Standards
21	COCOON Lab
25	COCOON Lab316 - Brushed Inox / Marble / Concrete
29	Concrete baths & basins
39	Solid Surface baths & basins
45	Natural Stone shower trays
47	John Pawson
52	John Pawson - Brushed Inox
55	John Pawson - Brushed Gold
59	John Pawson - Dark Grey
63	John Pawson - Natural Stone baths & basins
69	Piet Boon
73	Piet Boon - Brushed Inox
79	Piet Boon - Raw Copper
87	Piet Boon - Gun Metal Black
95	Piet Boon - Natural Stone and Solid Surface baths, basins & vanity



SALINAS BATH - SHELL / JP35.2 - BRUSHED GOLD

We are
COCOON

We believe in creating future classics, not just temporary trends. That's why our designers always consider the needs of future generations. We strive to use sustainable materials in all our products, ensuring that they will make a positive difference even after decades of use.

Our products are designed to bring happiness, comfort, and a sense of personal identity to people's lives. This idea is so pure that "COCOONING" has become a true lifestyle. In today's hectic and fast-paced world, people have a greater need to escape and feel at home. We believe that your home should be a safe and warm place where you can relax and be inspired, a space for transformation. A COCOON...



ATLANTIS IN CONCRETE 10 / JP01VALVES & JP35.2 - BRUSHED GOLD



Team up with COCOON

Our project division comprises an international and dedicated team of COCOON-educated architects and project managers. We can assist with project design, quotations, and the production of customized products to bring the most creative plans to life.

Over the years, COCOON has proven to be the ideal partner for developing (urban) villas, hotels, yachts, and wellness resorts.

Today, COCOON holds a position of excellence with a referencelist of hundreds of projects implemented across all five continents. Our fresh and flexible approach, coupled with our uncompromising commitment to quality (all taps are made entirely of AISI 316L marine-grade stainless steel), are the key values that enable us to deliver successful projects.



TULUM BATH IN COCOON BEIGE MARBLE / JP SET24THERM - DARK GREY

INSPIRED
BY
DREAMS



SALINAS BATH - PEBBLE / PB SET24THERM - GOLD

From room to
COCOON

Whether you're an architect, interior designer, or builder, share your plans with us and we'll help you bring them to life. We'll set you up with a professional account and provide you with all the information you need to create comprehensive quotations for your clients and order quickly and safely, all while enjoying professional rates.

We guarantee that your project will stand out and save you time, effort, and money in the end. Get in touch with us today; we're more than happy to assist you!

The Cocoon STANDARDS

100% RECYCLABLE

The 316L stainless steel we use for our bathroom taps is 100% recyclable. When a product made of this special material finally reaches the end of its long service life, it remains a valuable source of its main alloying elements chromium, nickel and molybdenum. These can be easily recovered and returned to the production process. Stainless steel recycling is an economically viable, self-sustaining process.

ECO FRIENDLY PRODUCTS

Selected for their durability and quality, the materials we use for our taps, basins and baths, guarantee a long life span and are Eco-friendly. Not only because the material itself is recyclable and lead-free, but also because we use special water saving techniques to keep the carbon footprint as small as possible.

WATER SAVING

COCOON taps and showers can be ordered with a flow-limiting aerator, reducing water consumption without compromising experience. The result: a satisfying, voluminous flow that never exceeds 5 litres per minute, which is as kind to your pocket as it is to the environment. Using less water means less energy is required to heat the

water consumption, installing a COCOON bathroom tap will help reduce your energy bills too.

LOW ENVIRONMENTAL IMPACT

COCOON is proud to only use cold working methods for our stainless steel and solid surface material and does not influence global warming. The energy that powers the production is certified clean, water is saved and waste is separated to be recycled, to reduce the impact of the company on the ecosystem.

LEAD FREE TAPS

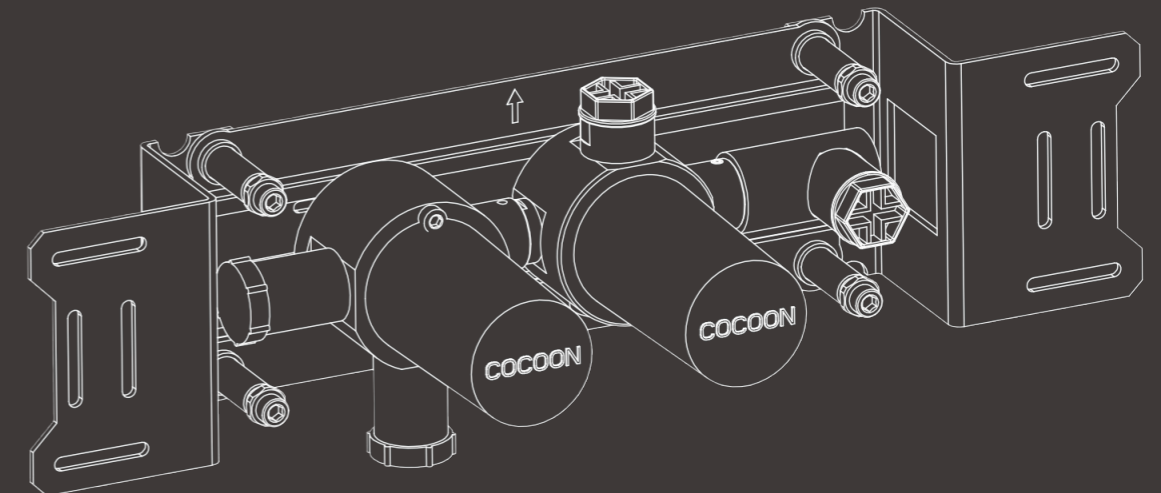
COCOON cares for you and for the world. The internal and exposed parts are made of 316L stainless steel and are by nature LEAD FREE. For projects in California and Vermont where special requirements of the California Health and Safety Code (commonly known as AB 1953) and Vermont Act 193 concerning lead in potable water systems apply, COCOON can deliver 100% stainless steel build-in valves for the wall mounted basin mixers, to be fully compliant to these standards.

CERTIFICATIONS

COCOON became an important reference within the sector for sustainable design and production. The components of our stainless steel tap collections, which are machined by high-tech equipment, are certified for their performance and safety by the most renowned Certifying institutes in the world.

ADVANCED COCOON BOX

INSTALLATION SYSTEM



New revolutionary build-in system for John Pawson and Piet Boon tap ware collections. The new system has some features which will enhance the ease of installation dramatically;

- depth adjustable installation frames for super easy and accurate installation
- lead free
- made in the highest grade AISI 316 stainless steel, in compliance with all major certifications
- all components on one frame, for fast installation
- ceramic cartridges are always reachable from the outside when walls are closed
- possibility to change exterior parts and thus the colors even after years of use
- optional NPT outlets for USA plumbing system

RAW MATERIALS
THAT GET MORE
BEAUTIFUL WITH AGE



PB BATH SOLID - CHALK / PB33 BATH SPOUT

COCOON and Studio Piet Boon share passion for craftsmanship, timeless design and natural materials that beautify with age. This mutual passion is captured in an exclusive collection of contemporary taps & basins: Shape by Studio Piet Boon.

**Shape by Studio Piet Boon brings industrial chic
to any kitchen or bathroom.**



JP BASIN - PIETRA GRIGGIO / JP SET11.3 - DARK GREY

GEOMETRIC SHAPES CLEAR TO *Operate*

Inspired by the simplicity and symmetry of geometric shapes, the tap collection features an unconventional faucet design paired with a soft, clear contoured mixer made of two isolated components that intuitively instruct users on how to operate them.

The bath & vanity collection is available in sustainable materials including solid surface, natural stone and wood.

SIMPLICITY IS
THE ULTIMATE
SOPHISTICATION

LEONARDO DA VINCI



Handcrafted
QUALITY
WITH SOUL

Making timeless and sturdy design is only one side of the coin. By using real sustainable materials and having the right people shaping these into pieces of usable art, our products are engineered to last a lifetime.

In Italy, near the idyllic Lago Maggiore, we have partnered with true craftsmen who shape our taps and showers by hand and machine using noble stainless steel.

New ideas from our designers offer a fresh look on tried and tested artisanal skills to make unique products according to traditional production values.



PB COLUMN - CARRARA SUPREME / PB SET01 - GUNMETAL BLACK

Photo by Thomas De Bruyne

Our baths and made-to-measure basins are crafted in our advanced workshop in the Netherlands.

We believe that the decades of combined experience of our skilled craftsmen will be evident in every single product we make.

MADE
TO LAST
A LIFETIME

COCOON LAB



ATLANTIS BATH IN CONCRETE 05 / PB SET24 - RAW COPPER

Our in-house design department has concocted a complete range of items blending into the COCOON environments with perfect harmony.

We are constantly exploring new materials and applications, such as baths and basins made from raw CONCRETE, as well as a super minimalist tap ware collection crafted from indestructible AISI 316 stainless steel. The handles are handmade and feature natural marble or concrete to perfectly match the vanity ware.



SALINAS BATH - CHALK / JP35.2 & JP04 - BRUSHED GOLD



PURIST BATH - COCOON BEIGE / JP SET25THERM - DARK GREY



PURIST BATH & BASIN 45 - GRIGGIO AMSTERDAM / JP SET25THERM & JP SET01 - DARK GREY



PURIST BASIN 45 - GRIGGIO AMSTERDAM / JP SET01 - DARK GREY

Cocoon Lab316
BRUSHED INOX
MARBLE / CONCRETE
TAP WARE COLLECTION



LAB SET22THERM - BRUSHED INOX



LAB BASIN 140/L - COCOON BEIGE / LAB SET02 - INOX/COCOON BEIGE

Freedom
OF CREATION

The LAB316 tap collection by COCOON is renowned for its timeless, minimalistic approach to high-end tapware. Its modular design, stripped back to essential beauty and golden ratios, has made it the preferred choice for architects worldwide for years to come. The collection is crafted from the indestructible AISI 316 marine grade stainless steel, making it one of the most versatile and sustainable tapware collections available.

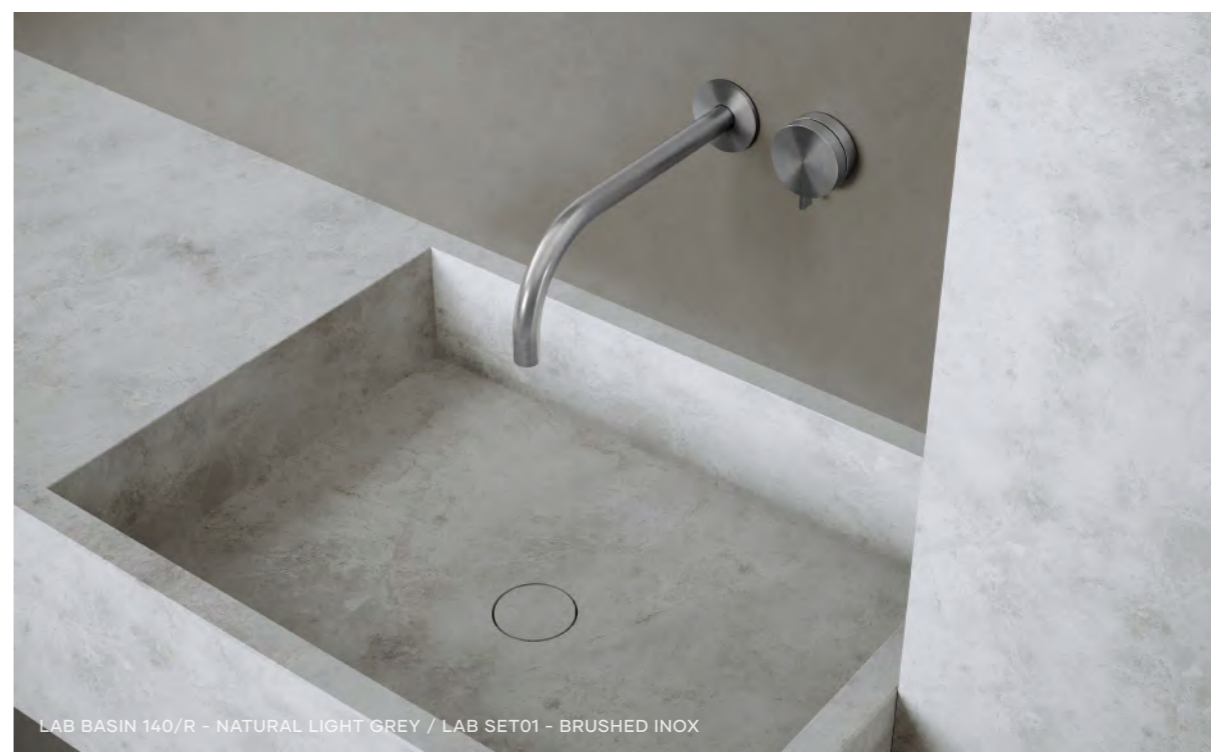
With this ever-evolving nature, COCOON brings indestructible beauty and timeless design at a reasonable price, making it accessible to everyone.



LAB BASIN 140/M - PIETRA GRIGGIO / LAB SET04-VALVES - BRUSHED INOX/PIETRA GRIGGIO



LAB BASIN 60/R - GRIGGIO AMSTERDAM / LAB 08 - BRUSHED INOX



LAB BASIN 140/R - NATURAL LIGHT GREY / LAB SET01 - BRUSHED INOX



CONCRETE BATHS & BASINS

ZEN BATH - CONCRETE 05 / JP35.2 & JP01VALVES - BRUSHED GOLD



LAB BASIN 140L - CONCRETE 08 / PB SET01 - RAW COPPER

Our COCOON LAB baths and basins are now also available in a new material; CONCRETE. In our LAB we were able to create an unique mixture which gives us all the benefits from the brutalist material, while making it extremely lightweight. This is the ultimate material to give that RAW wabi-sabi look to your bathroom. The natural aesthetics of this material and soft ton-sur-ton colour options make it the perfect choice to create that COCOON feel good atmosphere.

Furthermore this sturdy material:

- is easy to clean
- has a beautiful characteristic matte look
- is perfect to combine with our natural stone and solid surface products
- each item is handcrafted which gives each product its own unique appearance



LAB BASIN 140/M - CONCRETE 10 / LAB CABINET 140/25



LAB BASIN 60/L - CONCRETE 10 / LAB SET01 - BRUSHED INOX



ZEN BATH - CONCRETE 10 / PB01 & PB33 - GUNMETAL BLACK



ATLANTIS BATH - CONCRETE 01 / JP SET24THERM - BRUSHED GOLD



BOWL1.1 - CONCRETE 10 / JP SET02 - BRUSHED GOLD



SOLID SURFACE BATHS & BASINS



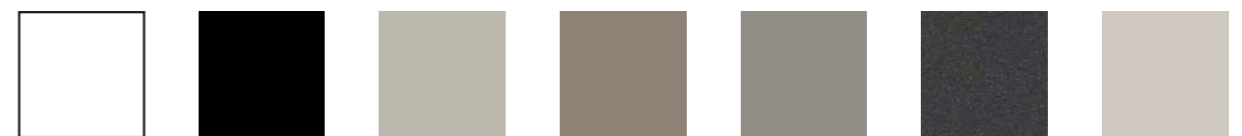
ATLANTIS BATH - EARTH / PB SET25THERM - GUNMETAL BLACK



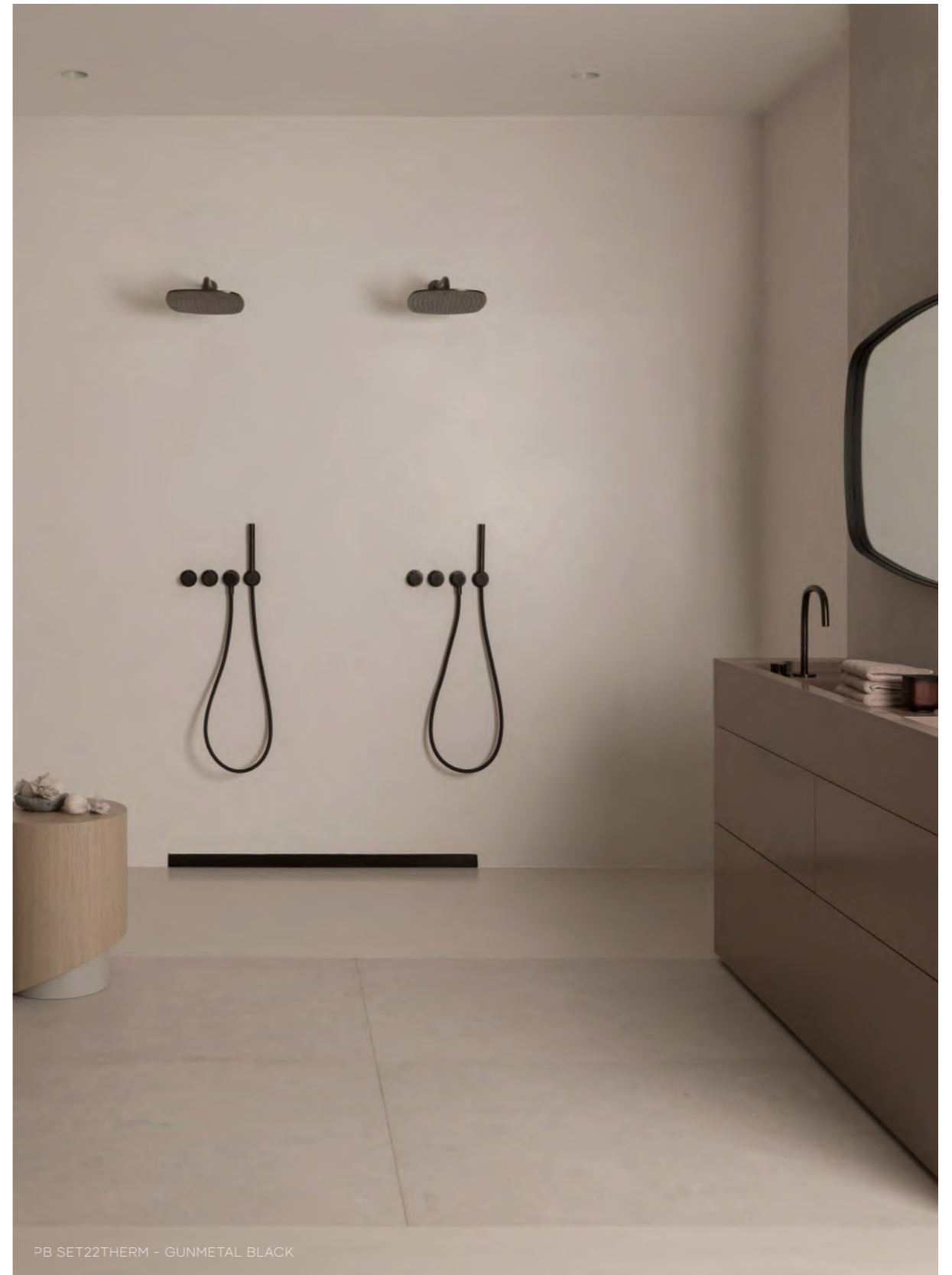
ATLANTIS BATH - DUST / PB SET24THERM - GUNMETAL BLACK

COCOON SOLID baths and basins are meticulously crafted from solid surface in our workshop in the Netherlands. This strong and durable material has a stone-like appearance, but with the added benefit of being non-porous. Solid surface is easy to clean and highly resistant to stains, moisture, and sunlight, making it the ideal choice for the bathroom environment.

As a homogenous surface, it is solid throughout and virtually scratch-proof. In the rare event that it does become scratched after years of use, it can easily be refinished to restore its original appearance. Our successful made-to-measure SOLID collection is available in six different colours.



CHALK COAL DUST EARTH PEBBLE ANTHRACITE SHELL



PB SET22THERM - GUNMETAL BLACK



ATLANTIS BATH - DUST / PB SET24THERM - GUNMETAL BLACK



ATLANTIS BATH - SHELL / JP01 & JP35.2 - BRUSHED GOLD



NATURAL STONE SHOWER TRAYS



The combination of water and stone is as old as the earth itself, and transmits an extraordinary sense of wellbeing that many people seek in a bathroom which is no longer merely a purely functional space. A shower tray in natural stone is wonderfully tactile underfoot, helping foster a relaxing, soothing environment far from the stresses of the external world. Natural stone is not only elegant and stylish but also extremely practical, making it the perfect material for a luxurious but functional bathroom.

Including recessed waste cover in same material.
Standard size 95 x 95 x 3 cm, but fully customisable.



JOHN PAWSON

British architect

British architect John Pawson CBE, who founded his firm of the same name in 1981, is often hailed as the father of modern architectural minimalism. Although a title he would most likely poke fun at, for almost forty years Pawson has championed nothingness as the most straightforward form of beauty.

During his illustrious career, simplicity as a philosophy is something he has explored in retail designs for Jil Sander, Calvin Klein, Christopher Kane and in various monasteries, churches, musea, residential projects, hotels and now a complete contemporary bathroom collection for COCOON.





JP BATH - GRIGGIO AMSTERDAM / JP SET25THERM - BRUSHED INOX



John Pawson
FOR COCOON

John Pawson designed a complete range of bathroom and kitchen tap ware in the COCOON signature material AISI316 marine grade stainless steel and a collection of bathtubs, bespoke basins and vanity made from natural stone.



PURIST BASIN 45 - GRIGGIO AMSTERDAM / JP SET01 - DARK GREY

Using pure and geometrical shapes, always honoring the 'golden ratio', John Pawson created another **timeless concept which will be enjoyed for many years to come.**

The gracious perfect shapes and spouts with extremely large radiuses are typical for his timeless faucet and shower collection.



John Pawson
BRUSHED INOX
TAP WARE COLLECTION

JP BASIN - NERO MARQUINA / JP SET11.2 - BRUSHED INOX



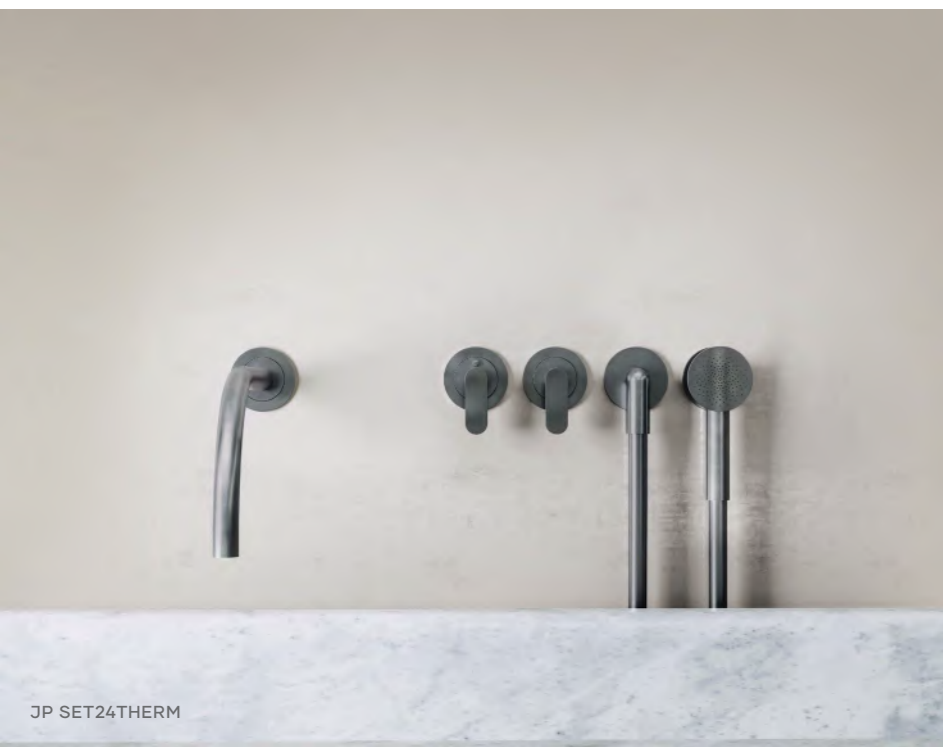
JP SET02.1

John Pawson designed a complete range of bespoke bathroom and kitchen tap ware in the COCOON signature material AISI316 marine grade stainless steel.



JP SET02 - BRUSHED INOX

BRUSHED INOX is the purest finish as it embraces the solid simplicity of the product. It features just solid stainless steel with a brushed, raw, yet clean character, and is treated with a NANO anti-fingerprint coating.



JP SET24THERM



JP 31

John Pawson
BRUSHED GOLD
TAP WARE COLLECTION

JP SET22THERM - BRUSHED GOLD



ATLANTIS BATH - CHALK / JP01 & JP35.2 - BRUSHED GOLD



JP 35.2 - GOLD



JP SET23THERM.2 - GOLD

The gracious perfect round shapes and spouts with extremely large radiuses are distinctive features. Our **BRUSHED GOLD** finishing just gives that extra dimension. We applied an anti fingerprint coating utilizing the latest NANO technology.



JP 30 - GOLD

John Pawson
DARK GREY
TAP WARE COLLECTION

ATLANTIS BATH - COAL / JP35.2 - DARK GREY



JP SET22THERM - DARK GREY

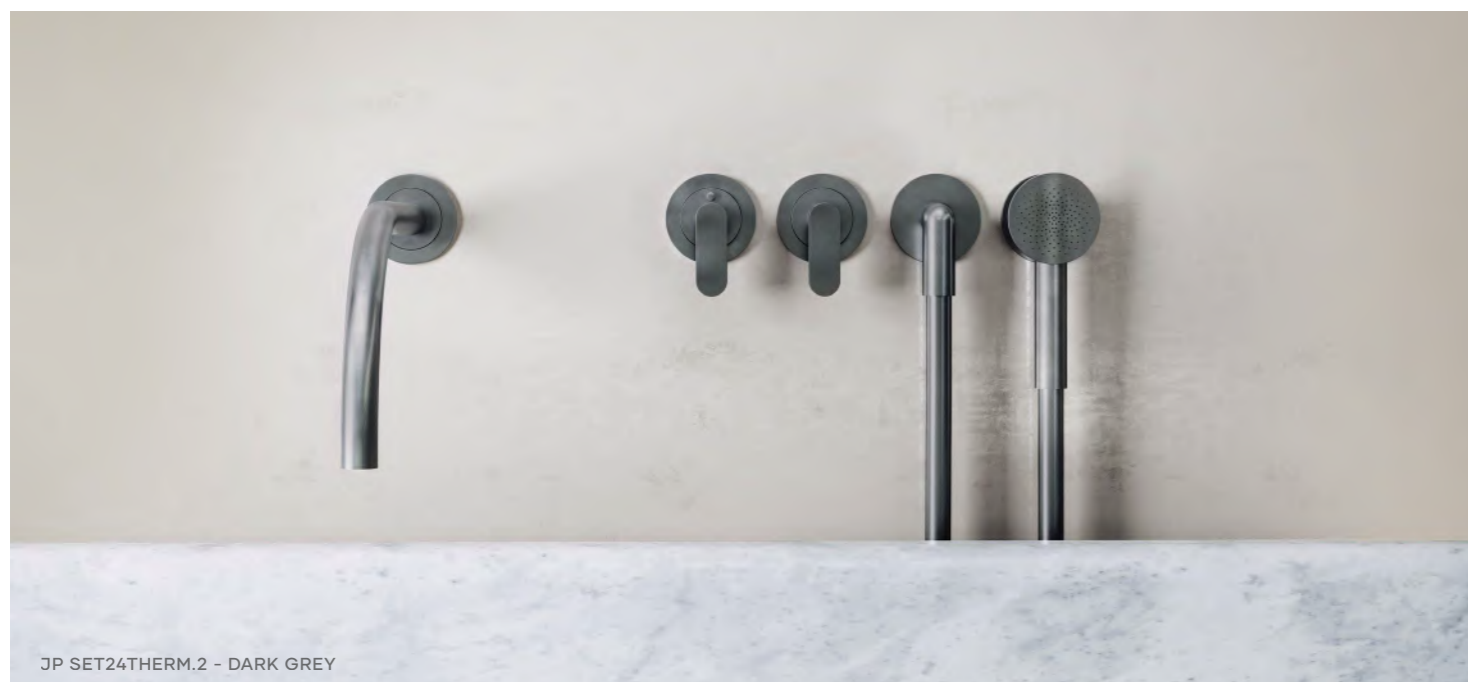


JP SET01.1 - DARK GREY

The John Pawson by COCOON collection is available in 3 unique PVD colours especially made for COCOON, all applied on the everlasting brushed steel and packed with new technological features, including the NANO anti-fingerprint coating, advanced water-saving systems, and a fully adjustable build-in system that ensures easy installation.



JP 16 - DARK GREY



JP SET24THERM.2 - DARK GREY

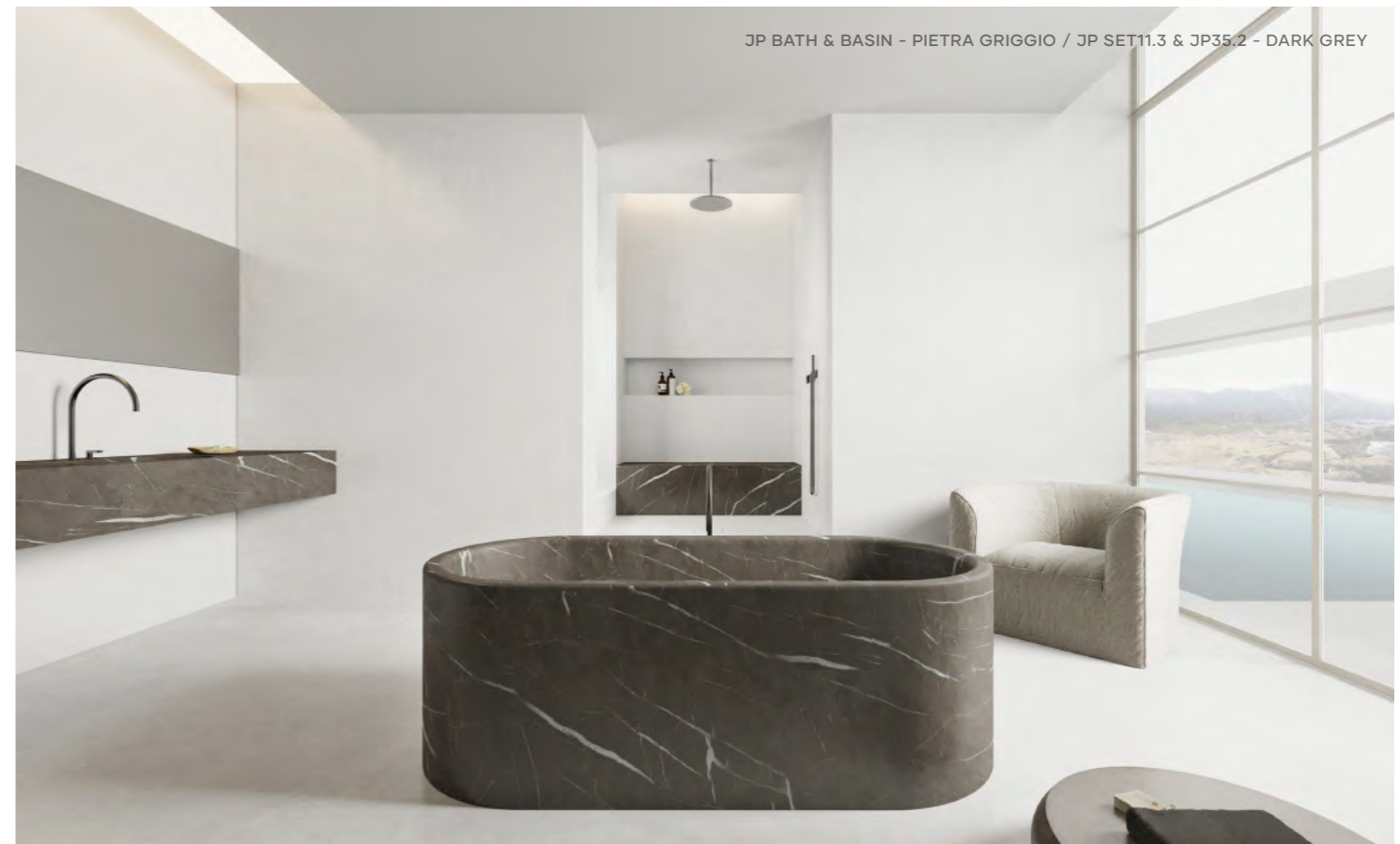
DARK GREY is a new colour especially engineered for this collection by COCOON.

John Pawson
NATURAL STONE
BATH & BASINS

John Pawson has designed this elegant collection of a natural stone bath, a solid stone column and a bespoke made to measure basin collection featuring beautiful clean lines and angles while putting the brutal nature of the stone central.



JP BATH - PIETRA GRIGGIO / JP SET25THERM.2



Each object is a piece of art, a living legend. The timeless John Pawson signature design has finally been captured in an exclusive yet approachable bathroom collection. The solid blocks of marble have been meticulously selected from the famous stone quarries in Italy and crafted to perfection into items to be melted seamlessly in their surroundings, as if they were always there.



JP COLUMN - NATURAL SAND / JP SET01 - BRUSHED GOLD



JP BATH - NATURAL SAND / JP SET25THERM - BRUSHED GOLD



PIET BOON

Designer

COCOON has the pleasure of working with Studio Piet Boon, one of the most renowned Dutch design studios. Studio Piet Boon creates bespoke contemporary architecture, interiors and product designs. Recognised worldwide for its exceptional craftsmanship, quality and vision, Studio Piet Boon creates distinguished design.

Founded in 1983 by Dutch designer Piet Boon (1958), the Studio Piet Boon philosophy is based on a balance between functionality, aesthetics and individuality. The ingredients that define the Piet Boon and COCOON experience. Suitable for every discipline, applicable to any industry.



reddot design award





PB 37 OUTDOOR SHOWER - COPPER

Photo by Thomas De Bruyne



PB BASIN 60/90 L - PIETRA GRIGGIO / PB SET11 - COPPER

Photo by Thomas De Bruyne

Piet Boon
BRUSHED INOX
TAP WARE COLLECTION

Photo by Thomas De Bruyne



PB MICRO BASIN 37 / NATURAL LIGHT GREY - PB 01VALVE & PB10 - BRUSHED INOX



Make the difference after decades of use

Stainless steel is the ideal material for architectural and high-demanding applications due to its high corrosion resistance and durability.





PB BASIN 60/12 - NATURAL GREY (BRUSHED)

Photo by Thomas De Bruyne

The aesthetic appearance of this ECO friendly and LEAD FREE material provides a modern and attractive base for our minimalistic tap collection designed by Piet Boon. Available in brushed stainless steel, and the exclusive **RAW COPPER** and **GUNMETAL BLACK** finishings.



PB 30



PB40 FREE STANDING BATH MIXER



When water meets fire

Add some refined sophistication to your bathroom
with our **RAW COPPER** taps.





The exclusive finishings by COCOON are different from what is commonly found in the market. They are applied on a 100% stainless steel base, rather than on a coating on brass. Due to patented PVD processes, our finishing is merged with the stainless steel surface retaining and even increasing all of the sustainable and durable properties COCOON taps are known for.





PB BASIN120/40 - COCOON BEIGE / PB SET11 - RAW COPPER

Piet Boon
GUN METAL BLACK
TAP WARE COLLECTION

Photo by Thomas De Bruyne



PB37 OUTDOOR SHOWER - GUNMETAL BLACK

Exclusive finishings by COCOON

The industrial chic **GUNMETAL BLACK** combines perfectly with our COCOON solid white baths and basins.



ATLANTIS BATH - SHELL / PB SET24THERM - BLACK

The characteristic appearance of the hand brushed stainless steel enriches the experience of the exclusive finishings, adding depth and soul to the surfaces.



PB SET22THERM - BLACK



PB BASIN 60 - NATURAL GREY / DRAWER 60 - SAHARA / PB SET11 - BLACK



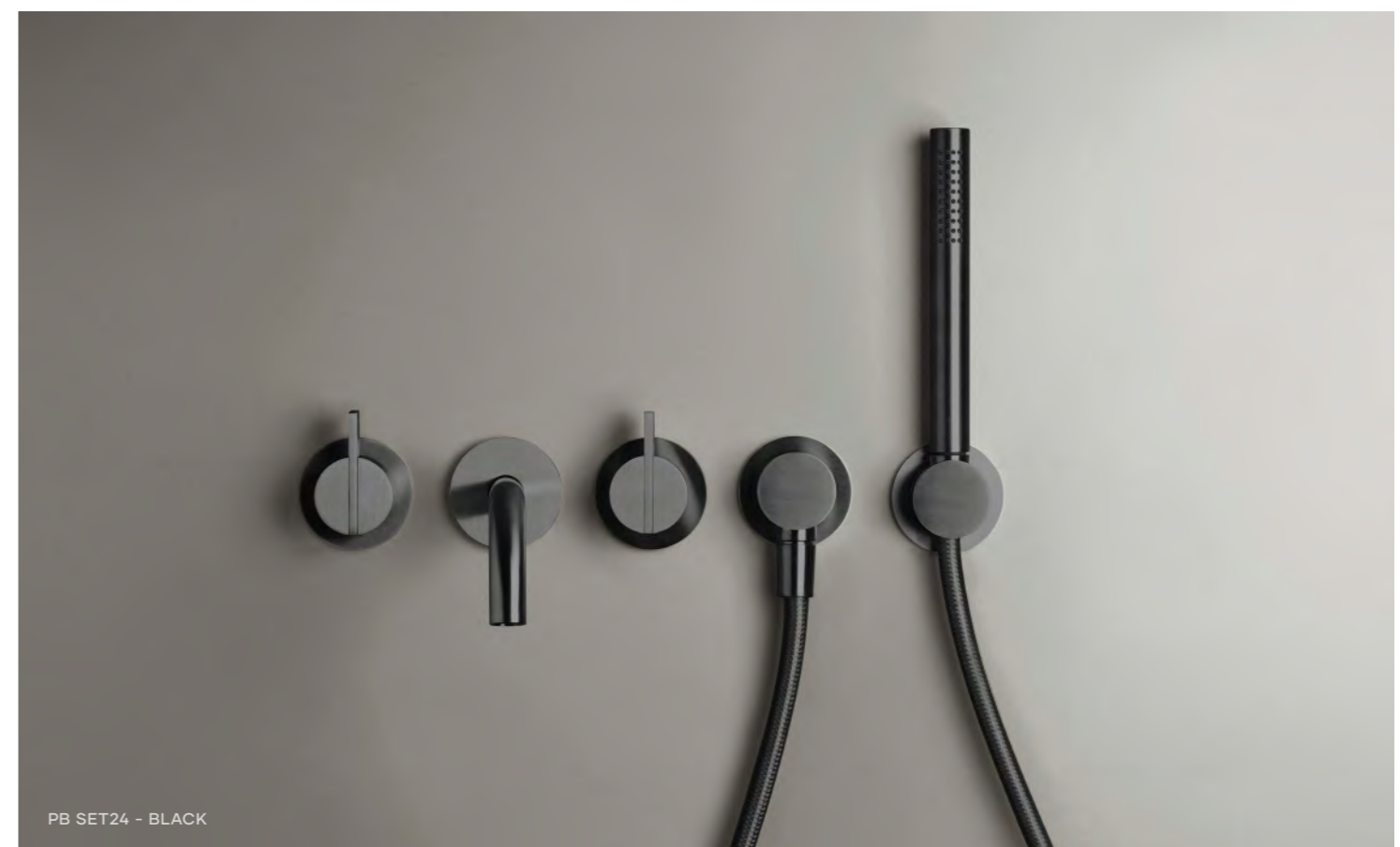
JP BASIN 60 - NERO MARQUINA / CABINET 60 - DARK CLAY / PB SET01 - GUNMETAL BLACK

Photo by Thomas De Bruyne



PB SET01 - BLACK / PB BASIN 60/20 B - NERO MARQUINA

Photo by Thomas De Bruyne



PB SET24 - BLACK



PB SET01 - BLACK



ATLANTIS BATH - PEBBLE / PB SET25THERM - GUNMETAL BLACK

PB BASIN 60/40 - NATURAL LIGHT GREY / DRAWER - SAHARA / PB SET11 - BLACK

Piet Boon
NATURAL STONE AND
SOLID SURFACE BATH,
BASINS & VANITY

This new comprehensive bathroom system is meant to embrace a wide range of sizes and material combinations. Available in the signature understated Piet Boon color and material palettes, the items can be assembled according to personal taste and budget.



PB BATH & PB COLUMNS - NATURAL LIGHT GREY

Emphasizing the experience, the collection seamlessly blends with other Piet Boon products.

The centerpiece of the collection is the natural stone bathtub with a basin column. Carved from a single block of natural marble it is the absolute summum.



PB BASIN 60/40 - NATURAL LIGHT GREY / DRAWER - SAHARA / PB SET11 - BLACK



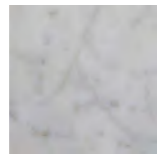
The basins are made from natural stone or solid surface while the cabinets can have fronts of wood but are also available in the same finishings as the basins.



PB BASIN 60 - COCOON BEIGE / PB SET11 - RAW COPPER



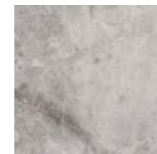
CARRARA SUPREME



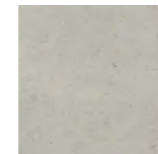
COCOON BIANCO



COCOON BEIGE



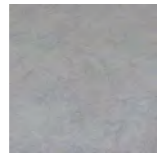
GRIGGIO AMSTERDAM



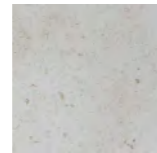
NATURAL BEIGE



NATURAL GREY



NATURAL LIGHT GREY



NATURAL SAND



NERO MARQUINA



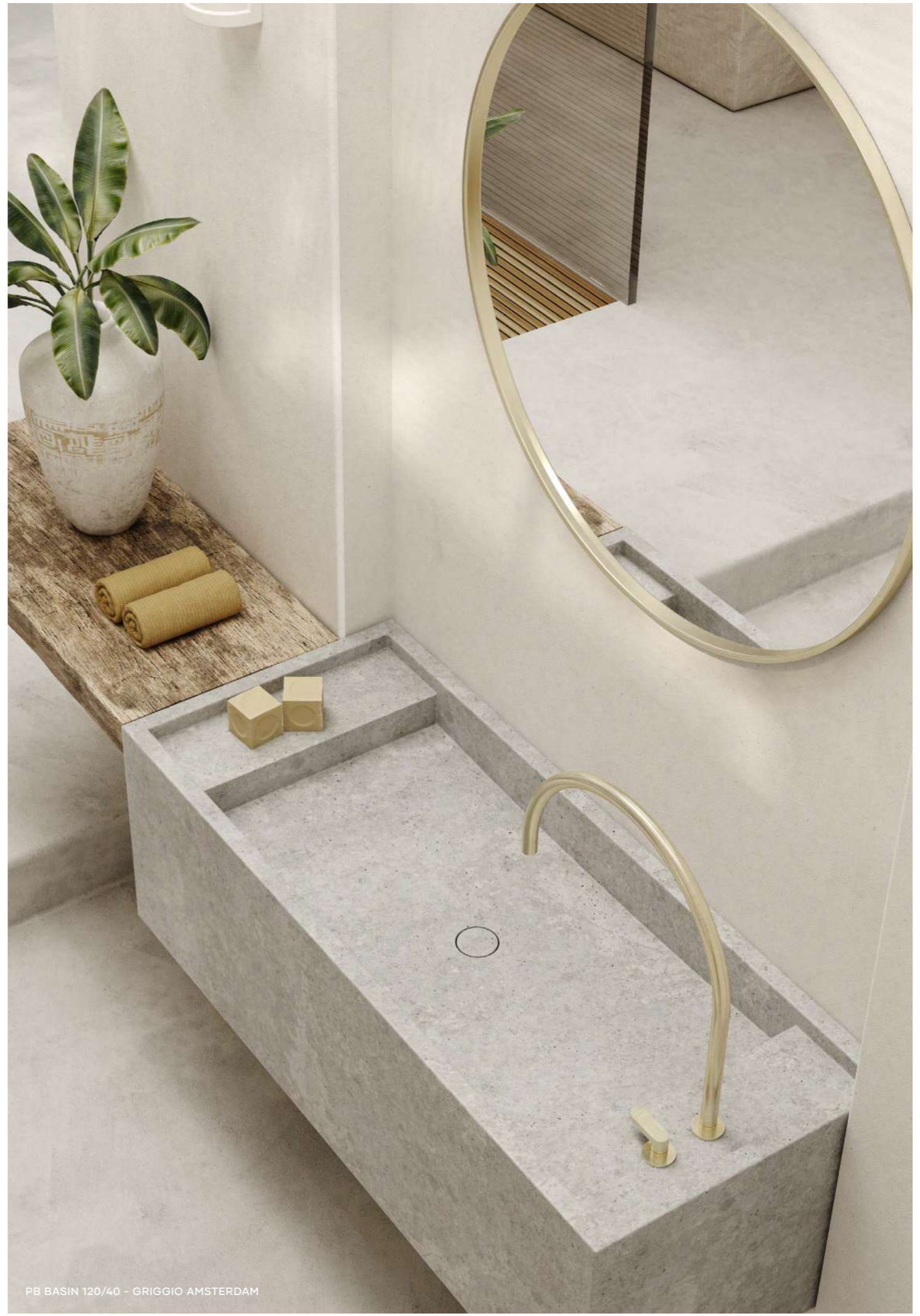
PIETRA GRIGGIO



PB BATH - COCOON BEIGE / PB SET24THERM - RAW COPPER



PB BASIN 120/20 - NATURAL SAND / CABINET 120/20 - SMOKE



PB BASIN 120/40 - GRIGGIO AMSTERDAM

- | | | | | | | |
|---|---|---|---|---|---|---|
|  |  |  |  |  |  |  |
| WHITE | SMOKE | SHADOW | GREY | DARK CLAY | SAHARA | NATURAL OAK |





COCOON

AMSTERDAM - ANTWERP - BEVERLY HILLS
CANNES - LONDON - MIAMI - NEW YORK - NORDICS
SEOUL - TEXAS - TORONTO - VANCOUVER - TEL AVIV

WWW.BYCOCOON.COM

+31 20 808 7557 / INFO@BYCOCOON.COM

 [COCOONBATHROOM](https://www.instagram.com/cocoonbathroom)  [COCOONBATHROOM](https://www.facebook.com/cocoonbathroom)